

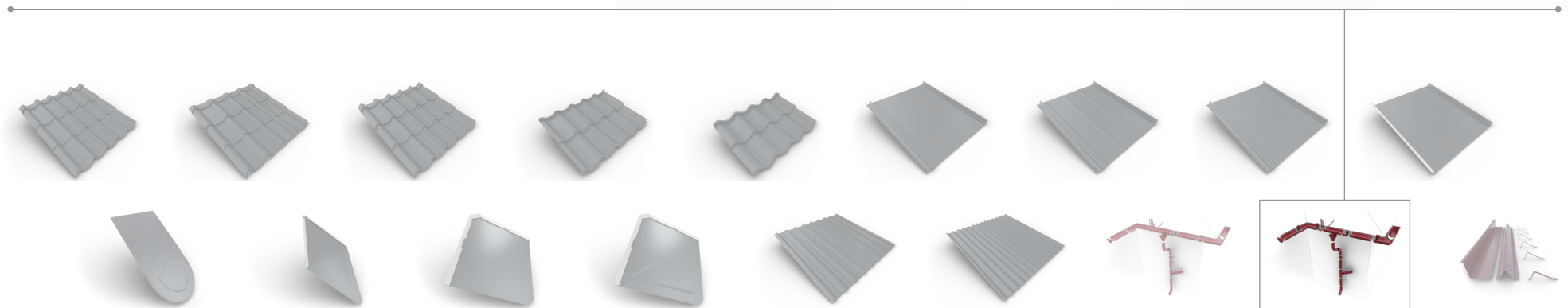
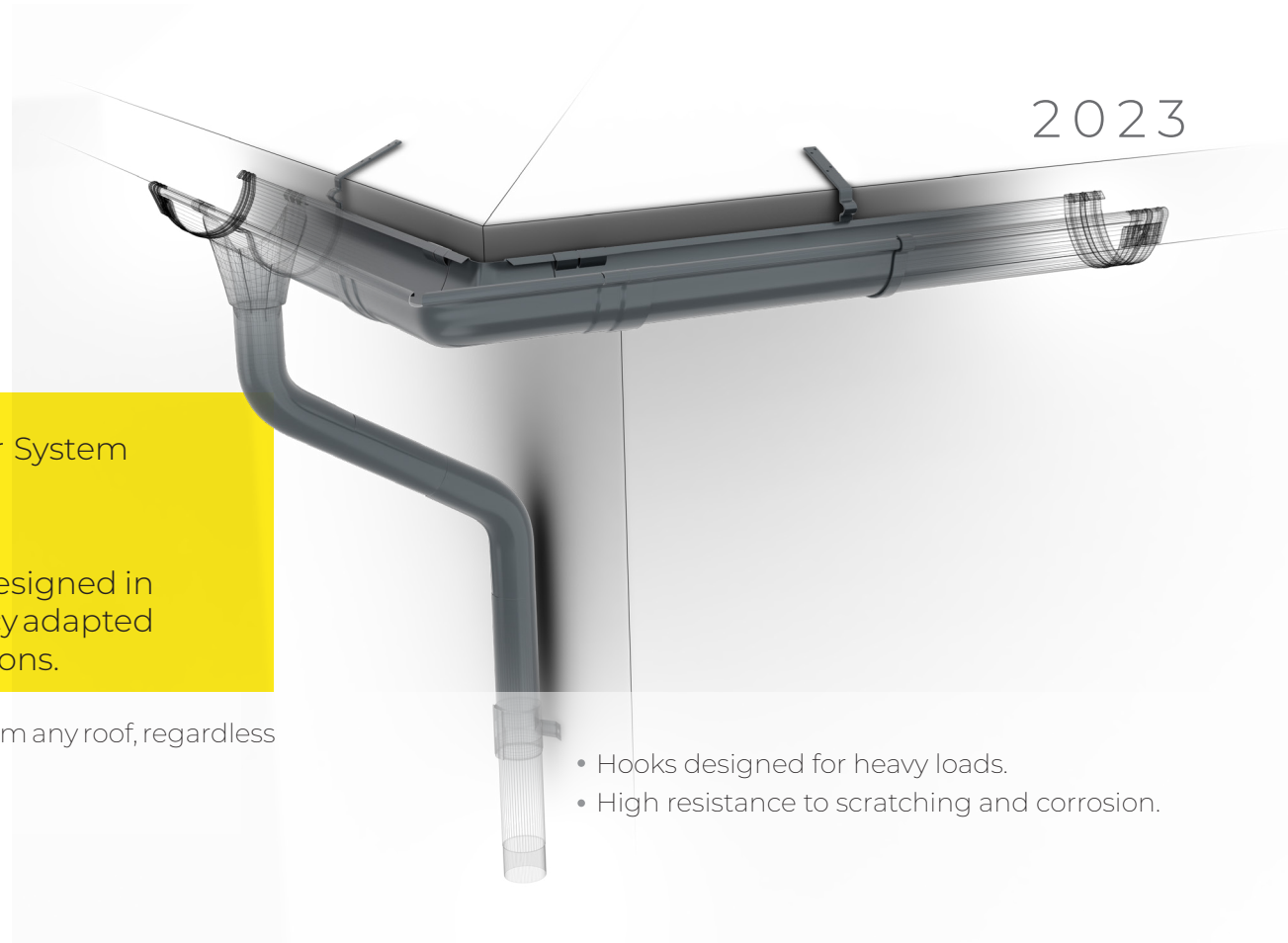
Residential ————— Rain Water Collector System

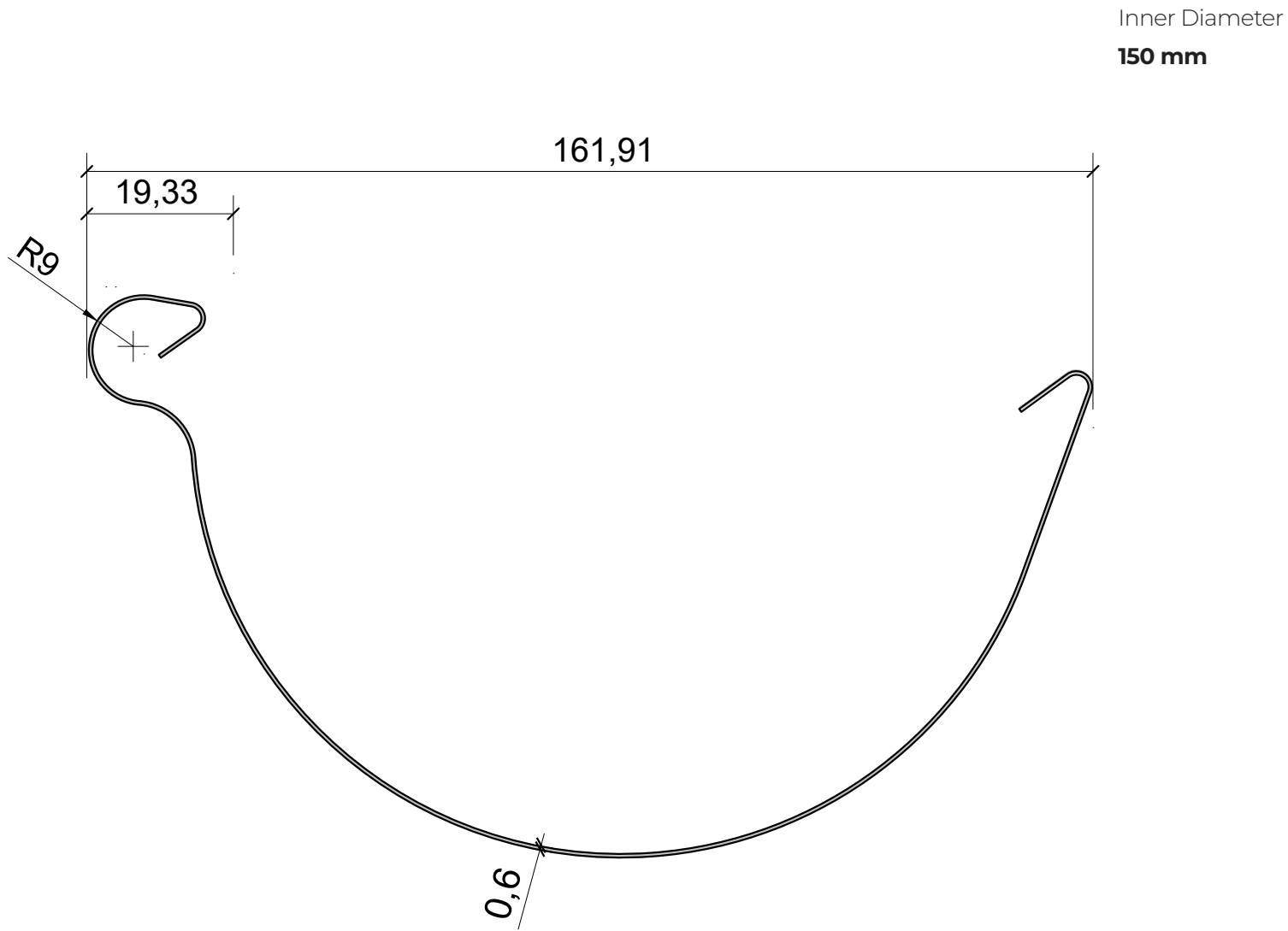
BELPROFILE 150/90

BELPROFILE rain water collector systems are designed in two dimensional variants to obtain high efficiency adapted to each type of roof, in different climatic conditions.

- Ensures the collection of rainwater and its evacuation from any roof, regardless of its surface.
- Designed for efficiency and quick installation.
- Corner with special gaskets and fasteners.
- Intelligent system that prevents water from spilling.

- Hooks designed for heavy loads.
- High resistance to scratching and corrosion.





Inner Diameter
150 mm



pre-painted hot-dip galvanized steel

thickness **0,55 mm**

finish	warranty	lifespan	weight	zinc protection layer	paint protection layer
MagneZinc	20 years	100 years	4,3 kg/m²	120 g/m²	-

Provides additional protection, being three times more resistant to corrosion as compared to zinc-coated steel.



Natur

thickness **0,60 mm**

RainDrop	20 years	100 years	4,4 kg/m²	275 g/m²	SPE 35 + 35 µm
-----------------	-----------------	------------------	-----------------------------	----------------------------	-----------------------

Super-polyester coating, with greater color stability in time and enhanced scratch resistance.



RAL 3005



RAL 3009



RAL 3011



RAL 7016



RAL 7024



RAL 8004



RAL 8017



RAL 8019



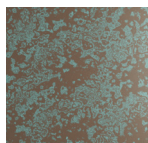
RAL 9005



RAL 9010

PrinTech	20 years	100 years	4,4 kg/m²	275 g/m²	HDP 30 + 15 µm
-----------------	-----------------	------------------	-----------------------------	----------------------------	-----------------------

The best-performing sheet-metal coating product, it is applied in 10 layers and offers the longest lifespan.



Weathered



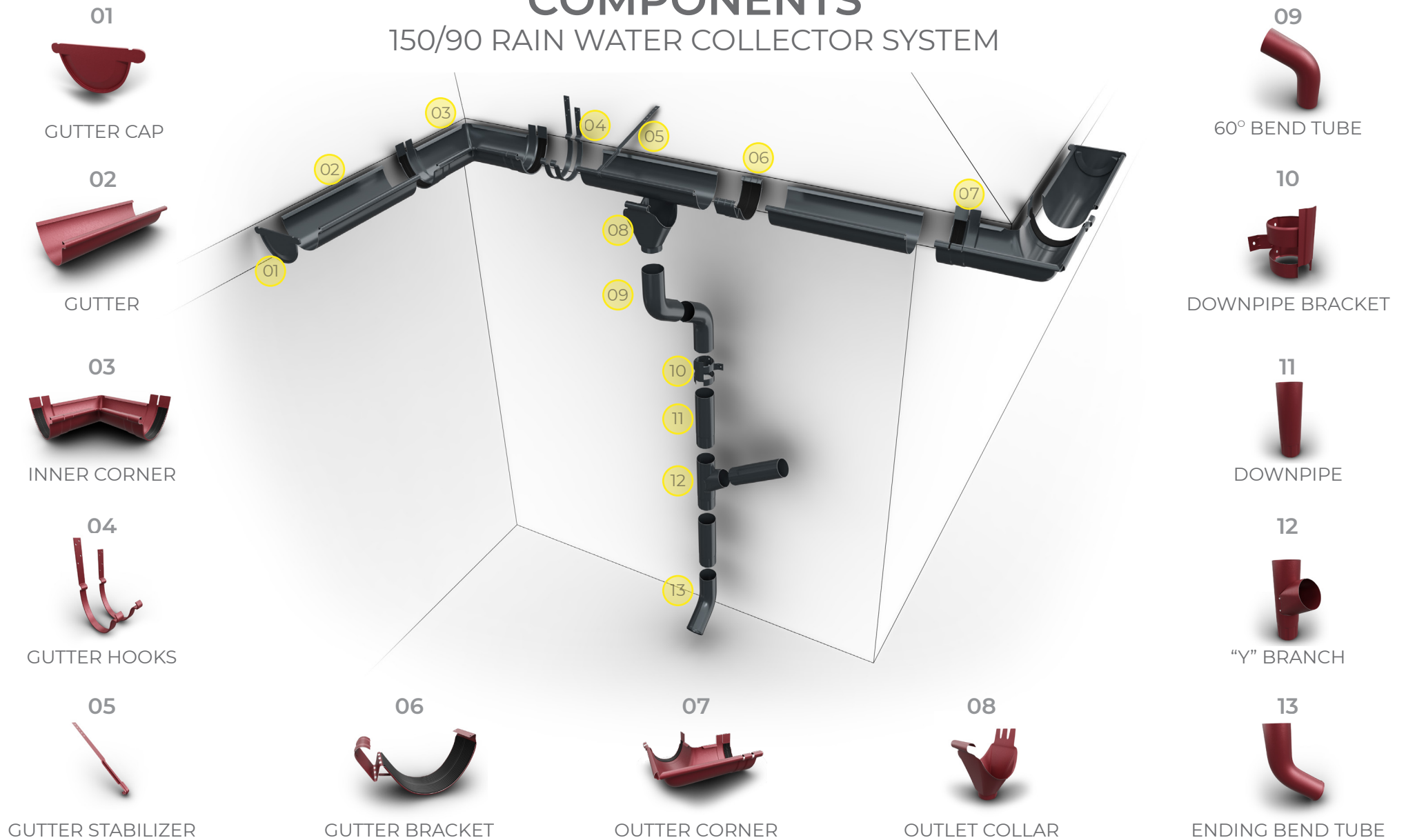
Korten



HairLine
Copper

COMPONENTS

150/90 RAIN WATER COLLECTOR SYSTEM



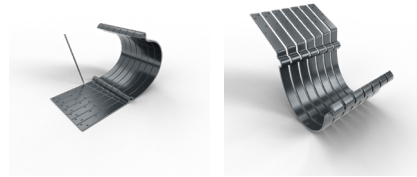
150/90 RAIN WATER COLLECTOR SYSTEM INSTALATION GUIDE

Sheet-metal work components for rainwater collection shall be installed before positioning the metal tile panels

01 TRACING AND BENDING HOOKS

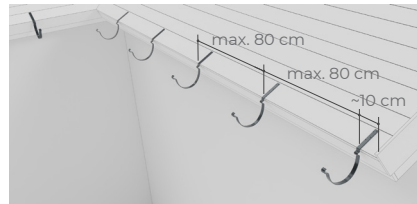
The tracing of the hooks is done taking into account 2.5 - 5 mm for each linear meter of eaves.

When mounting the hooks, a difference of 5 mm from the horizontal level will be taken into account, based on the internal locking pin of the hook.



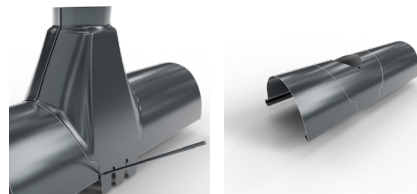
02 MOUNTING THE HOOKS ON ROOF SUPPORT

Before mounting the hooks, it is necessary to draw a drain slope towards the location of the downpipe. It is preferable for the trough slope to be about 2 mm every 1 linear meter. The distance at which the hooks are mounted will not exceed 80 cm, and the hooks at the ends will be 10 cm to the edge of the roof.



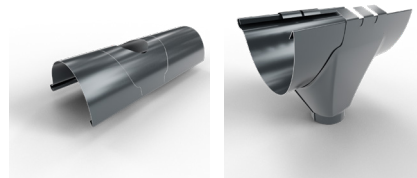
03 THE OUTLET COLLAR

Position the gutter in the hooks and mark with a pencil the location of the outlet collar. Using the joint, mark the contour of the connection on the gutter and then, with the help of the hacksaw, cut it into a "V".



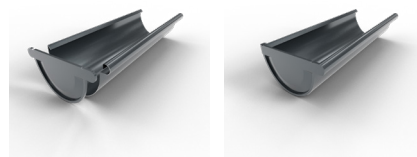
04 THE OUTLET COLLAR

Using a sheet metal scissors, cut a hole with a diameter of 85 mm, taking as a reference point the center drawn with the help of the joint, then, with the help of a rubber hammer, gently tap the edge of the cut. Push the bent edge of the gutter-pipe connection into the gutter, then push the connecting piece back and secure the securing straps inside the gutter.



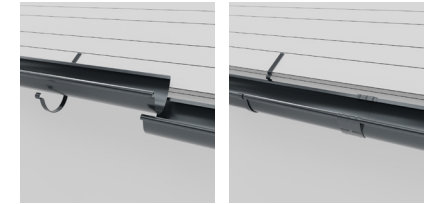
05 THE GUTTER CAP

Attach the cover to the edge of the gutter by lightly pressing it with your hand, making sure that its circumference coincides with the mounting channel in the cover. Then tap the lid with the palm of your hand, or lightly with a rubber mallet, until it completely enters the gutter.



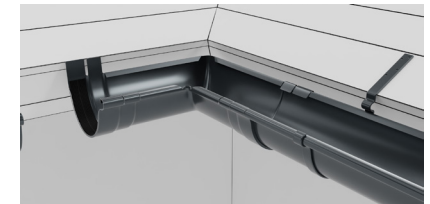
06 JOINING THE GUTTER SECTIONS

The joining of the gutter sections is done either by the end-to-end assembly of the sections - using the gutter joint (to provide increased strength and rigidity to the joint), or by overlapping. After the butt assembly, the gutter bracelet will be applied, on which, previously, a sealant (silicone) will be applied.



07 JOINING THE INNER / OUTER CORNER

The inner and outer corners are fixed by connections to the gutters (gutter brackets). To ensure the bending strength of the connection, at the end of the gutter and the corners, the fastening element will be inserted before mounting or they can be superimposed using silicone between the two overlapping elements.



08 MOUNTING THE DOWNPIPES

The 60° bend tube is mounted at the top in the gutter connection and at the bottom in the pipe. The connection of two bends is made with the help of a pipe extension whose length is given by the distance A to which is added 100 mm. Each end of the pipe extension enters the 50 mm in the downpipe.



09 BENDING END TUBE AND SPECIAL PARTS

The bending end tube is installed when the pipe is not connected to a sewer system.

The sewer connection is a connecting element between the downpipe and the sewer system.

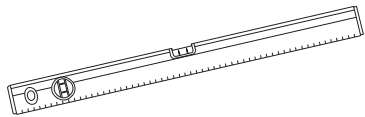
The damper connection is installed on the pipe so that the water can be diverted to the outside.

The Y pipe connection connects two different pipes to the same outlet.

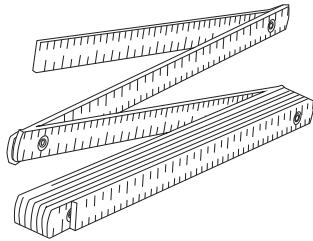


MINIMUM SET OF TOOLS REQUIRED FOR ASSEMBLY

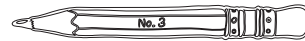
SPIRIT LEVEL



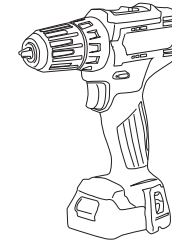
METER



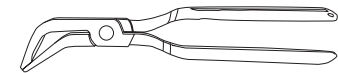
CARPENTRY PENCIL



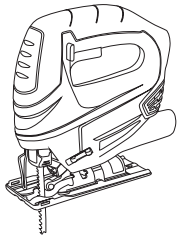
CORDLESS SCREWDRIVER



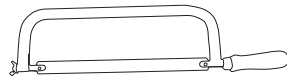
SHEET METAL PROFILE PLIERS



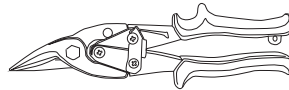
ELECTRIC JIGSAW



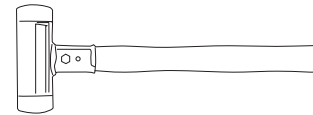
HACKSAW



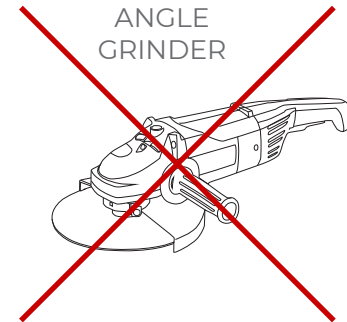
SHEET METAL SHEARS



SAFETY SOFT-FACED HAMMER



~~ANGLE GRINDER~~



VERY IMPORTANT!

BELPROFILE products (metal tiles, corrugated iron, drainage systems and accessories) are shipped on wooden pallets to avoid bending or hitting the products. Store in dry and ventilated areas, protected from sun, moisture and aggressive substances (eg: acids, salt, wet concrete). The tile is stored on wooden pallets, placed one meter away. It is not recommended to overlap more than 3 pallets of 150 tile sheets each. Pallets must be covered but good ventilation will be provided to prevent condensation. The storage of the tile outside must be only temporary, not more than 72 hours and in an inclined plane of at least 10°.

Metallic roof tiles handling

To lift the tile easily and without damage to the roof is recommended placement of two sleepers in the extension roof slats to the ground, thus so that the panels will be supported when they will be drawn.

Cutting

Special tools will be used in smithery (electric scissors or manual). It is strictly forbidden to cut with the help of an angle grinder.

Cleaning after cutting

The filing resulting from the cutting is removed with a soft brush.

Paint for retouching

It is used to cover accidental scratches and to protect cut edges. Do not use on large surfaces because color differences may occur.